

Gujarat's 1st Project which offers
fully furnished farm house



*a rich retreat to rest,
relax and refresh...*



Project by:





fully furnished weekend homes
Up Close with Nature

Tranquility. Peace. Relaxation. — Exuberant. Breathtaking. Exhilarating.

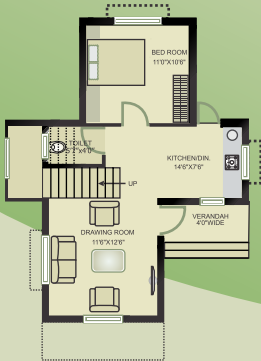
Enjoy owning a fully furnished week-end home in a lush green and an eco friendly environment with all modern amenities, where one lives by coming more in tune with their inner spirit and our natural environment. We envisage Pearl Villa to truly evolve into the most sought after lifestyle, and good property investment opportunity.



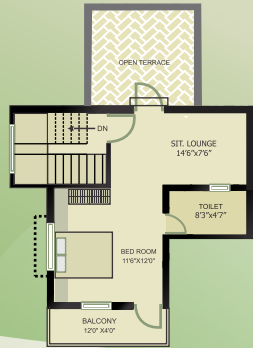
(Villa Type - A)

Dimensions

TYPE - A



Ground Floor



First Floor

INTERNAL SPECIFICATION



FLOORING :
Vitrified flooring in all rooms



WALL FINISH :
Inside finish plaster with putty finish and outside double coat plaster with Apex or equivalent paint.



KITCHEN :
Granite platform with SS Sink and glazed tile dedo up to lintel level.



TOILETS :
Colour glazed tiles flooring & dedo up to lintel level.



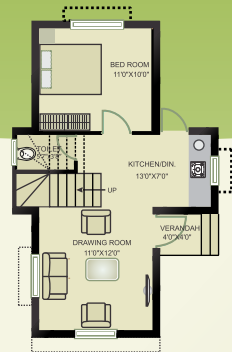
PLUMBING :
Concealed plumbing with high standard pipe fitting.



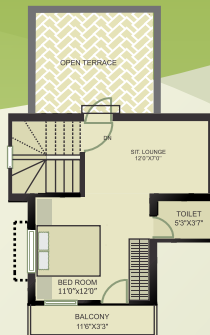
ELECTRIFICATION :
Concealed copper wiring according to electric design.

Dimensions

VILLA TYPE - B



Ground Floor



First Floor

| Type of Villa | A | B |
|----------------------------------|-----------|-------|
| Area of Construction (Sq. Yards) | 150 | 120 |
| Offerings | | |
| ZBHK Villa with Terrace | Yes | Yes |
| Attached Bathroom with Fittings | Yes | Yes |
| Kitchen Platform with Sink | Yes | Yes |
| Toilet on first floor | Yes | Yes |
| Spacious Car Parking | Yes | Yes |
| Beautiful Garden | Yes | Yes |
| A.C. | 2 | 1 |
| LCD TV | 26" | 22" |
| Double Bed | 2 | 2 |
| Cupboard | 2 | 2 |
| Sofa Set (Sitting) | 2 + 1 + 1 | 2 + 1 |
| Freeze | Yes | Yes |
| Water Purifier | Yes | Yes |
| Elec. Hot Plate | Yes | Yes |
| Chairs (Moulded) | 4 | 3 |
| Fans | 3 | 3 |
| Swing (Zulla) | Big | Small |
| Gazebo in the Garden | Yes | -- |
| Music System in the Garden | Yes | -- |

Proposed land for Phase - 2



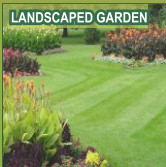
General Notes :

- The contents of this brochure are purely conceptual and have no legal binding on us.
- The developers reserve the rights to change or make any modifications, additions, omissions in the scheme as a whole or any part thereof or any details therein, at their sole discretion.
- The dimensions shown in are approximate.
- All payment should be in favor of "AARON INFRASTRUCTURE".
- Stamp Duty & Legal Expenses, Service Tax and Maintenance Deposit are to be borne by the buyer.
- This scheme is limited for Pearl Villa members only.
- Members cannot make changes in services like GEB cable, water line, all such rights are reserved with the developer.
- M/S Aaron Infrastructure has sole right to accept any member(s) and their decision shall be final in all aspects.
- All Matters are Subject to Ahmedabad Jurisdictions only.

Layout Plan

Common amenities for members

LANDSCAPED GARDEN



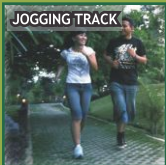
TENNIS COURT



- A grand entrance with single entry and exit points
- Enticing week-end villa in an eco friendly environment
- Dense plantation
- Club house with all indoor game facilities
- Tennis court / badminton court
- Cricket pitch
- Swimming pool
- Large garden / party lawn

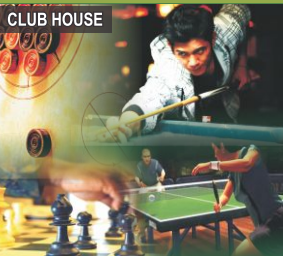
- Jogging and cycling track
- Water-body / fountain
- Children park
- Comfort zone for senior citizens
- 24 x 7 security staff
- 24 hours water supply
- Glorious street lights
- Fully protected walls

JOGGING TRACK



CHILDREN PARK

GAZEBO

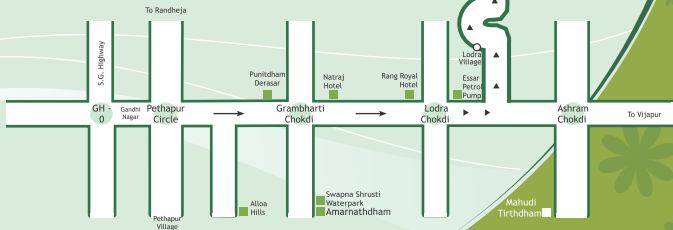


SWIMMING POOL



Road Navigator

Pearl villa
the green paradise



Developed by :



Aaron Infrastructure

Corporate Office :

14, First Floor, Galaxy Mall,
Opp. Ocean Park,
Nehrunagar to Shivranjani Road,
Satellite, Ahmedabad - 380015.
Ph: (079) 2673 0233
Mob.: 97238 18212

B/204, Dev Aaditya Arcade,
Nr. Baghban Party Plot,
Thaltej Silej Road, A'bad.
Ph: (079) 4006 4545
(079) 4008 4545

info@pearlvilla.co.in
www.pearlvilla.co.in

Designer :

Sthapatya Associates,
Ahmedabad.

Project Site :

Lodra - Aajol Road,
Gandhinagar to Mahudi Highway,
Gandhinagar.